

1st FLOOR SPECS

North Stage

- 9,000 Sq ft Stage
- 30ft + Ceiling
- (2) 600 Amp 3 Phase Electrical Distribution Box to Dual Cam-Lok
- 3,600 Amps Total Power
- 5 Tons of Completely Silent Air Conditioning (Can Be Run When Rolling Sound)
- Remote Controlled Rolling Lights & Bells
- Truck Drive In Loading Bays

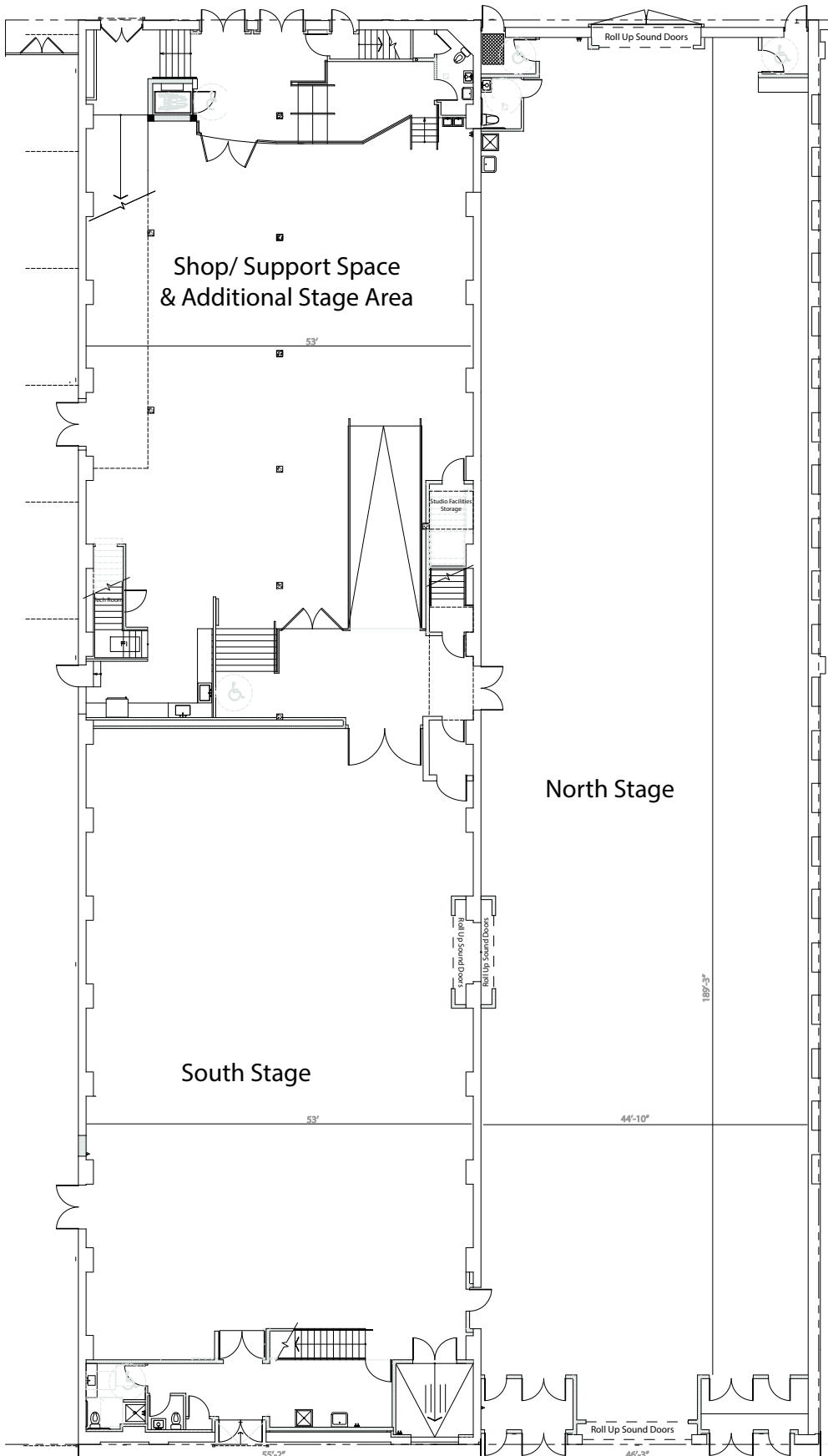
South Stage

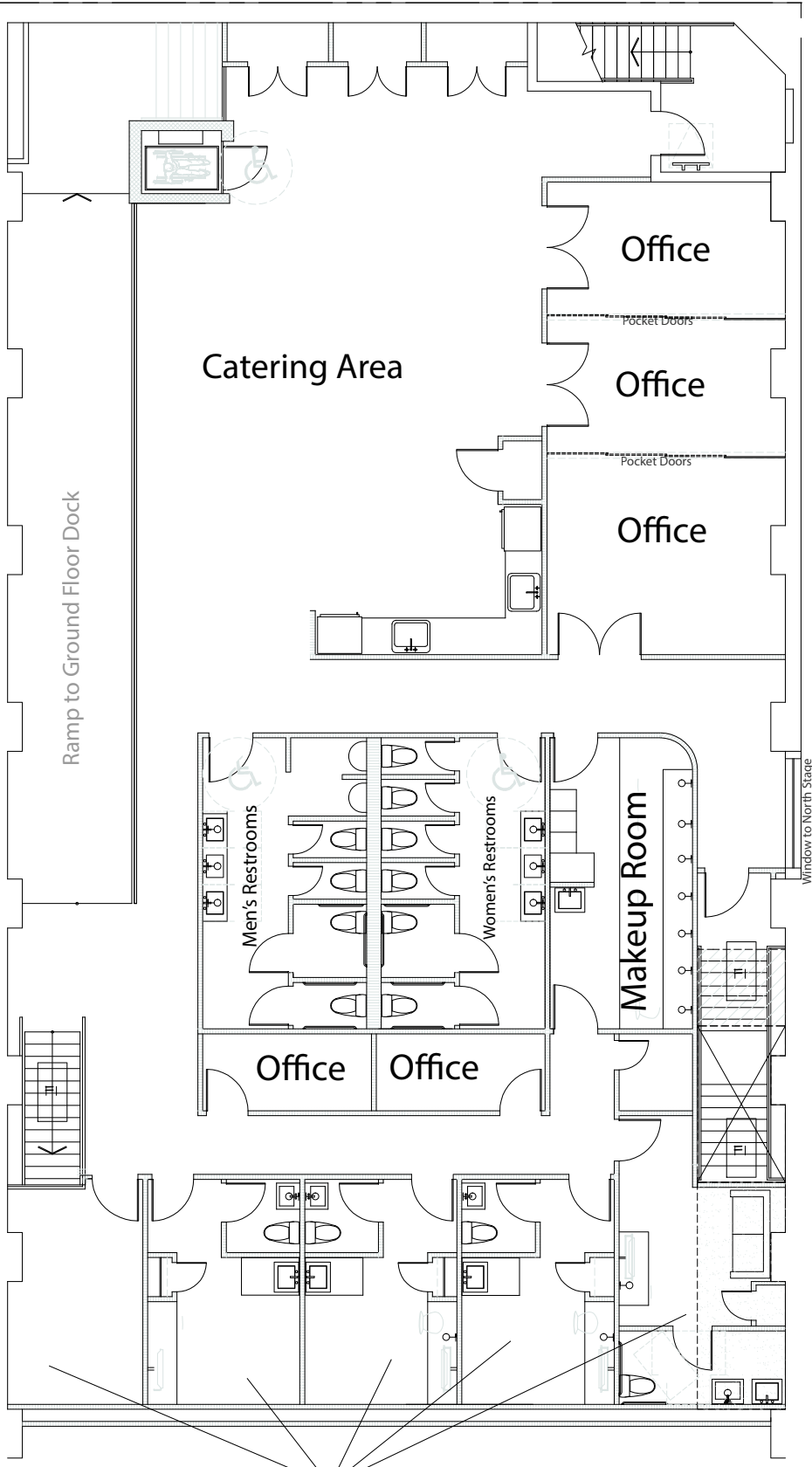
- 5,000 Sq ft Stage
- 28ft + Ceiling & Grid Heights
- (1) 600 Amp 3 Phase Electrical Distribution Box to Dual Cam-Lok
- 1,800 Amps Total Power
- 25 Tons of Completely Silent Air Conditioning (Can Be Run When Rolling Sound)
- Remote Controlled Rolling Lights & Bells
- Drive In Access

Shop/ Support Space & Additional Stage Area

- 5,000 Sq ft
- (1) 200 Amp 3 Phase Electrical Distribution Box to Dual Cam-Lok
- 600 Amps Total Power
- 6 Tons of Very Quiet Air Conditioning

High Speed Internet/ Wifi Throughout Entire Studio





2nd FLOOR SPECS

2nd Floor Office/Catering Area/ Dressing Rooms

- 5,000 Sq ft
- (4) Private Star Dressing Rooms with Private Bathrooms, Vanity Sink & Counter, Desk, Couch & Closet
- (1) Private Large Dressing Room
- (3) Large Offices which can be used for Production, Wardrobe or Other
- Sliding Pocket Doors allow these offices to be separated or opened into a variety of combinations

High Speed Internet/ Wifi Throughout Entire Studio

Private Dressing Rooms